

KALLASTU

praeludium

et

invention

1990

Senza metra, ritmo ad libitum, veloce
senza espr., stacc., dolce

ppp
senza Ped.

Handwritten musical notation for the first system. The treble clef staff begins with a circled '4' and contains notes with various accidentals (sharps, flats, naturals). The bass clef staff contains notes with accidentals. Dynamic markings include 'pppp sub ppp' in the treble staff and 'be be' in the bass staff.

Handwritten musical notation for the second system. The treble clef staff contains notes with accidentals. The bass clef staff contains notes with accidentals.

Handwritten musical notation for the third system. The treble clef staff contains notes with accidentals. The bass clef staff contains notes with accidentals.

Handwritten musical notation for the fourth system. The treble clef staff contains notes with accidentals. The bass clef staff contains notes with accidentals.

Handwritten musical notation for the fifth system. The treble clef staff contains notes with accidentals. The bass clef staff contains notes with accidentals.

3

Handwritten musical notation for the first system, measures 1-2. The system consists of a grand staff with a treble clef on the upper staff and a bass clef on the lower staff. The music is in a key with one flat (B-flat major or D minor) and a 3/4 time signature. The melody in the treble clef starts on a whole note G4, followed by quarter notes A4, Bb4, and C5. The bass line starts with a whole note chord of Bb3 and F3, followed by quarter notes G2, A2, Bb2, and C3.

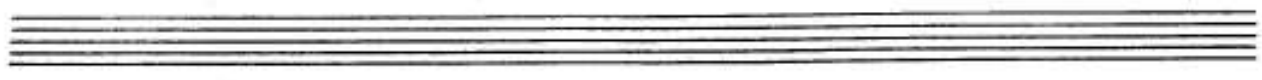
Handwritten musical notation for the second system, measures 3-4. The melody continues with quarter notes D5, E5, F5, and G5. The bass line continues with quarter notes D2, E2, F2, and G2.

Handwritten musical notation for the third system, measures 5-6. The melody continues with quarter notes A5, Bb5, and C6. The bass line continues with quarter notes A2, Bb2, and C3.

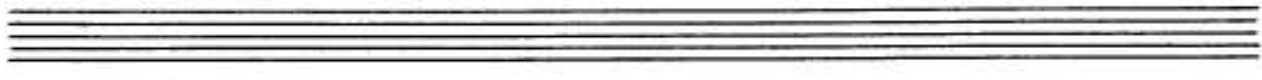
Handwritten musical notation for the fourth system, measures 7-8. The melody continues with quarter notes D6, E6, and F6. The bass line continues with quarter notes D2, E2, and F2.

Handwritten musical notation for the fifth system, measures 9-10. The melody continues with quarter notes G6, F6, and E6. The bass line continues with quarter notes G2, F2, and E2.

Handwritten musical notation for the first system. The treble clef staff contains a sequence of notes: G4 (sharp), A4 (flat), B4, C5, D5, E5, F5, G5, A5, B5, C6, D6, E6, F6, G6, A6, B6, C7. The bass clef staff contains notes: G2, A2, B2, C3, D3, E3, F3, G3, A3, B3, C4, D4, E4, F4, G4, A4, B4, C5. There are some additional markings like a 'b' and a 'sharp' sign.



Handwritten musical notation for the second system. The treble clef staff contains notes: G4 (sharp), A4 (flat), B4, C5, D5, E5, F5, G5, A5, B5, C6, D6, E6, F6, G6, A6, B6, C7. The bass clef staff contains notes: G2, A2, B2, C3, D3, E3, F3, G3, A3, B3, C4, D4, E4, F4, G4, A4, B4, C5. There are some additional markings like a 'b' and a 'sharp' sign.



Handwritten musical notation for the third system. The treble clef staff contains notes: G4 (sharp), A4 (flat), B4, C5, D5, E5, F5, G5, A5, B5, C6, D6, E6, F6, G6, A6, B6, C7. The bass clef staff contains notes: G2, A2, B2, C3, D3, E3, F3, G3, A3, B3, C4, D4, E4, F4, G4, A4, B4, C5. There are some additional markings like a 'b' and a 'sharp' sign.



Handwritten musical notation for the fourth system. The treble clef staff contains notes: G4 (sharp), A4 (flat), B4, C5, D5, E5, F5, G5, A5, B5, C6, D6, E6, F6, G6, A6, B6, C7. The bass clef staff contains notes: G2, A2, B2, C3, D3, E3, F3, G3, A3, B3, C4, D4, E4, F4, G4, A4, B4, C5. There are some additional markings like a 'b' and a 'sharp' sign.



Handwritten musical notation for the fifth system. The treble clef staff contains notes: G4 (sharp), A4 (flat), B4, C5, D5, E5, F5, G5, A5, B5, C6, D6, E6, F6, G6, A6, B6, C7. The bass clef staff contains notes: G2, A2, B2, C3, D3, E3, F3, G3, A3, B3, C4, D4, E4, F4, G4, A4, B4, C5. There are some additional markings like a 'b' and a 'sharp' sign.

5

Handwritten musical notation for the first system, measures 1-2. The system consists of two staves. The upper staff is in treble clef and contains a melodic line with notes and accidentals (flats and sharps). The lower staff is in bass clef and contains a bass line with notes and accidentals. The notation is handwritten and includes various accidentals and note heads.

Handwritten musical notation for the second system, measures 3-4. The system consists of two staves. The upper staff is in treble clef and contains a melodic line with notes and accidentals. The lower staff is in bass clef and contains a bass line with notes and accidentals. The notation is handwritten and includes various accidentals and note heads.

Handwritten musical notation for the third system, measures 5-6. The system consists of two staves. The upper staff is in treble clef and contains a melodic line with notes and accidentals. The lower staff is in bass clef and contains a bass line with notes and accidentals. The notation is handwritten and includes various accidentals and note heads.

Handwritten musical notation for the fourth system, measures 7-8. The system consists of two staves. The upper staff is in treble clef and contains a melodic line with notes and accidentals. The lower staff is in bass clef and contains a bass line with notes and accidentals. The notation is handwritten and includes various accidentals and note heads. The system concludes with a double bar line and a fermata over the final note in the upper staff.

Three empty musical staves, each consisting of five lines, arranged vertically. They are blank and contain no musical notation.

♩ = 108

6

Handwritten musical score for the first system, measures 1-2. The music is written on a grand staff with treble and bass clefs. Measure 1 features a melodic line in the treble clef with a slur and a dynamic marking of *pppp*. Measure 2 continues the melodic line with a slur and a dynamic marking of *f*. A double bar line is present between measures 1 and 2.

Handwritten musical score for the second system, measures 3-4. The music is written on a grand staff. Measure 3 has a dynamic marking of *mf* and a slur. Measure 4 has a dynamic marking of *f* and a slur. A double bar line is present between measures 3 and 4.

Handwritten musical score for the third system, measures 5-6. The music is written on a grand staff. Measure 5 has a dynamic marking of *dim.* and a slur. Measure 6 has a dynamic marking of *mf* and a slur. The tempo marking *a tempo* is written above the staff. A double bar line is present between measures 5 and 6.

Handwritten musical score for the fourth system, measures 7-8. The music is written on a grand staff. Measure 7 has a dynamic marking of *mf* and a slur. Measure 8 has a dynamic marking of *f* and a slur. The tempo marking *quasi batt.* is written above the staff. A double bar line is present between measures 7 and 8.

Handwritten musical score for the fifth system, measures 9-10. The music is written on a grand staff. Measure 9 has a dynamic marking of *mf* and a slur. Measure 10 has a dynamic marking of *f* and a slur. The tempo marking *poco agitato* is written above the staff. A double bar line is present between measures 9 and 10.

7 dolce

Handwritten musical score for measures 7-12. The score is written on two staves (treble and bass clef). Measure 7 is marked with a '7' and the tempo 'dolce'. The music features complex rhythmic patterns with many beamed notes and rests. Chord symbols are written below the bass staff, including $b\frac{7}{4}$, $b\frac{7}{4}$, $b\frac{7}{4}$, $b\frac{7}{4}$, $b\frac{7}{4}$, $b\frac{7}{4}$, $b\frac{7}{4}$, $b\frac{7}{4}$, $b\frac{7}{4}$, $b\frac{7}{4}$, $b\frac{7}{4}$, and $b\frac{7}{4}$. Measure 12 is marked with a '12' and a 'p' dynamic marking.

Handwritten musical score for measures 13-14. Measure 13 is marked with a '13'. Measure 14 is marked with a '14' and the tempo 'poco rit.'. The music continues with complex rhythmic patterns and chord symbols.

Handwritten musical score for measures 15-16. Measure 15 is marked with a '15' and the tempo 'A tempo'. Measure 16 is marked with a '16' and the tempo 'legg.'. The music features complex rhythmic patterns and chord symbols. A 'dis' marking is present below the bass staff in measure 16. A 'poco cresc.' marking is present above the treble staff in measure 16.

Handwritten musical score for measures 17-18. Measure 17 is marked with a '17' and the dynamic 'mp'. Measure 18 is marked with a '18' and the tempo 'poco cresc.'. The music continues with complex rhythmic patterns and chord symbols.

Handwritten musical score for measures 19-20. Measure 19 is marked with a '19'. Measure 20 is marked with a '20'. The music continues with complex rhythmic patterns and chord symbols.

Handwritten musical score, measures 21-22. The notation is dense with many accidentals and dynamic markings. Measure 21 starts with a treble clef and a key signature of two flats. Measure 22 includes a *p* dynamic marking.

Handwritten musical score, measures 23-24. The notation continues with complex rhythmic patterns and numerous accidentals. Measure 23 includes a *p* dynamic marking. Measure 24 includes a *p* dynamic marking.

Handwritten musical score, measures 25-26. Measure 25 includes a *cresc.* dynamic marking. Measure 26 includes a *dim.* dynamic marking.

Handwritten musical score, measures 27-28. Measure 27 includes a *cresc.* dynamic marking. Measure 28 includes a *dim.* dynamic marking.

Handwritten musical score, measures 29-30. Measure 29 includes a *cresc.* dynamic marking. Measure 30 includes a *f* dynamic marking.

9

Handwritten musical score for measures 9-32. The top staff (treble clef) contains a melodic line with various accidentals and slurs. The bottom staff (bass clef) contains a bass line with similar notation. Measure numbers 31 and 32 are indicated at the start of their respective lines.

Handwritten musical score for measures 33-34. The top staff is marked "string." and "a tempo". The bottom staff continues the bass line. Measure numbers 33 and 34 are indicated.

Handwritten musical score for measures 35-36. The top staff is marked "lento accel." and "a tempo". The bottom staff is marked "molto accel." and "cresc.". Measure numbers 35 and 36 are indicated.

Handwritten musical score for measure 37. The top staff contains a few notes, and the bottom staff contains a few notes. Measure number 37 is indicated.

Empty musical staff consisting of five lines.

Empty musical staff consisting of five lines.

Empty musical staff consisting of five lines.